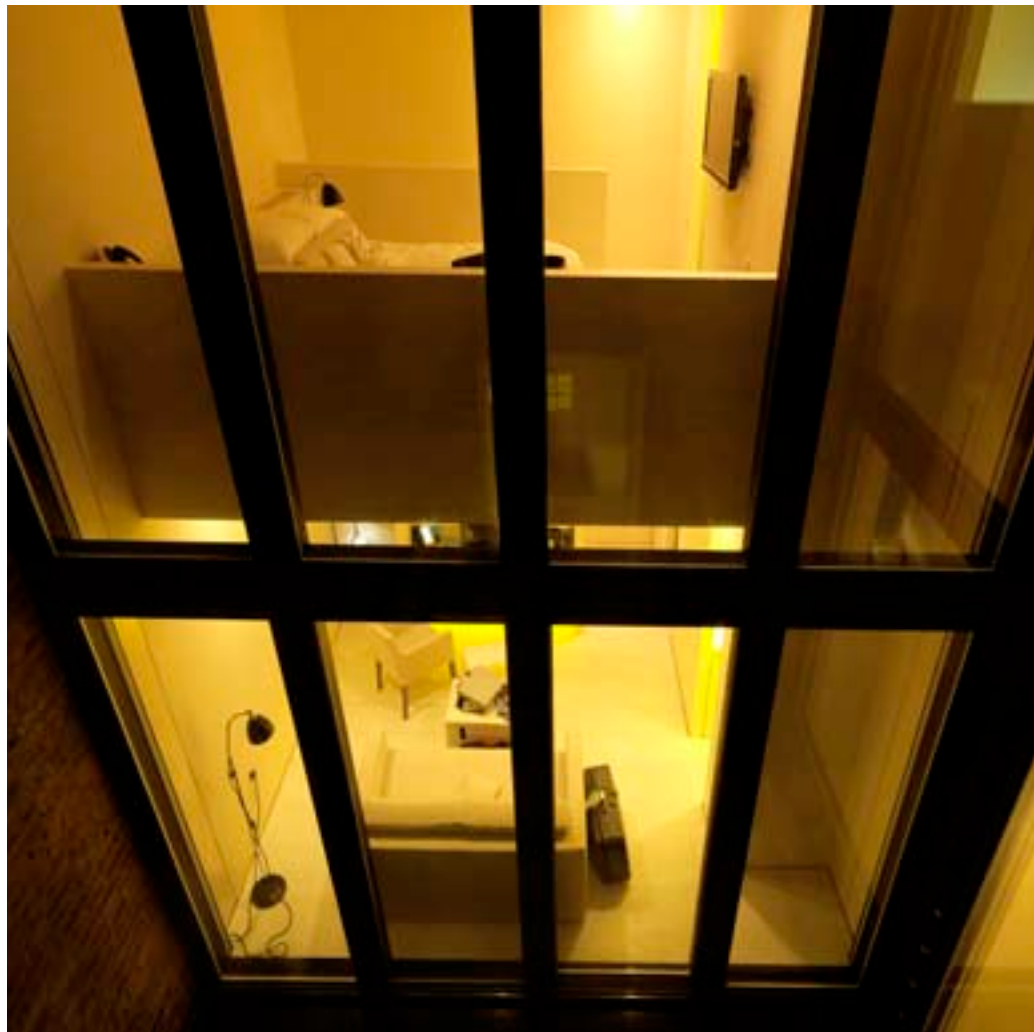




LA SUITE

Marylebone

www.lasuitehotel.com

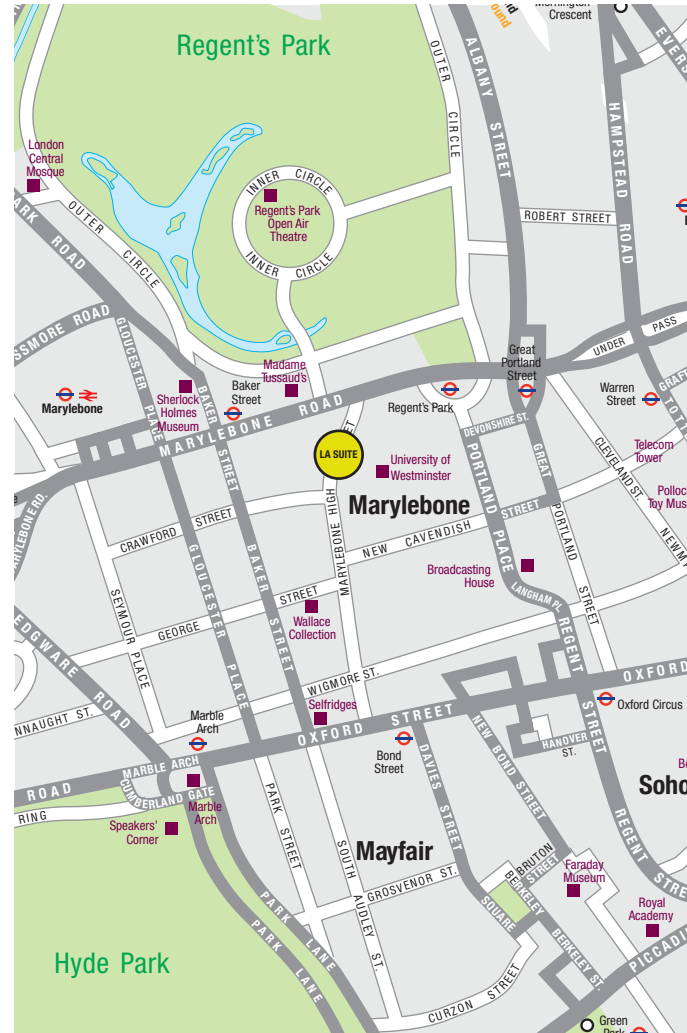


LA SUITE

Marylebone

LOCATION

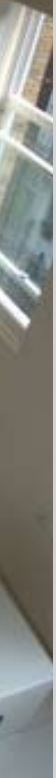
To describe La Suite's setting in the heart of London, we would like to borrow the phrase used by experts in determining the desirability of a property - "location, location, location". Walking distance from Oxford Street and Mayfair, nearby the City, so close to everything you hardly need a taxi. Need we say more?



TRAVEL	Car Park	Chiltern Street			
	Underground	Baker St Station: 2 minutes walk Lines: Jubilee, Metropolitan, Circle, Hammersmith and City, Bakerloo			
	Airports	Gatwick	Heathrow	Luton	Stansted
	Distance	28 miles	18 miles	35 miles	37 miles
ATTRACTIONS	Marylebone Village 1 minute walk	A cosmopolitan oasis in the centre of London with a unique village atmosphere. Offers many boutiques and designer shops as well as traditional English pubs and eateries to suit every taste and budget.			
	Regent's Park 5 minute walk	The largest outdoor sports area in London, is just a short walk away. Go for a jog or take a gentle stroll through the landscaped gardens and stop off for a snack at one of the park cafés.			
	Oxford Street 10 minute walk	Oxford St, one of the busiest and most famous shopping streets in the world, is just a 10 minute walk away. Here you'll find a mix of large department stores (eg Selfridges) and famous fashion boutiques in this shopper's paradise.			
	Soho 20 minute walk	Soho, with its numerous cinemas and world famous theatres, is only a 20 minute walk or, a short hop on the underground. Here you'll find an eclectic mix of bars, cafés, restaurants and specialist shops.			
	Madame Tussauds Across the road	Madame Tussauds has been entertaining Londoners and people from all over the world for over 200 years with its lifelike models of famous celebrities			

LA SUITE 37	Number of Executive Suites	17
	Hydroshower or Jacuzzi bath	✓
	Beddings made of finest Egyptian cotton	✓
	Fully stocked kitchenette	✓
	In-room safe	✓
	In-room bar	✓
	Partitioned sleep and work space	✓
	Lobby offering round-the-clock complementary refreshments	✓
	Free broadband access	✓
	Direct dial telephone	✓
LCD TV and DVD player or Sony PS3 in suites	✓	
LA SUITE 24	Number of Executive Suites	16
	Marble tiled bathrooms with walk-in shower or bath	✓
	Beddings made of finest Egyptian cotton	✓
	Kitchenette	✓
	In-room safe	✓
	In-room bar	✓
	Partitioned sleeping and work space	✓
	Lounge with complimentary refreshments	✓
	FREE broadband access	✓
	Direct dial telephone	✓
LCD TV with Sony PS3 in all suites	✓	
Freeview	✓	
Iron/ironing board	✓	
Breakfast served to your room daily	✓	





LA SUITE 24



DESIGN

Anouska Hempel

An hotelier and designer of global repute, [Anouska Hempel](#) is ranked as one of the top 100 interior designers and architects in the world. She is known for her perfection and striking designs of landmark hotels, restaurants, and even luxurious private homes and landscapes.

Her experience as hotelier, combined with her minimalist design, clean lines and ample space, ensures the best possible quality of experience is enjoyed by all.





BUSINESS

Once there were hotels for businessmen. Then there were boutique hotels catering to the most discerning clientele. La Suite is the best of both worlds – **the first boutique business hotel**, with everything you could possibly need for doing business in the most pleasurable environment, and at reasonable rates.

Suites with working-meeting area.
Fully stocked kitchenette with large refrigerator.
Utensils for accommodating guests.
All business services provided.









LA SUITE 37





DETAILS

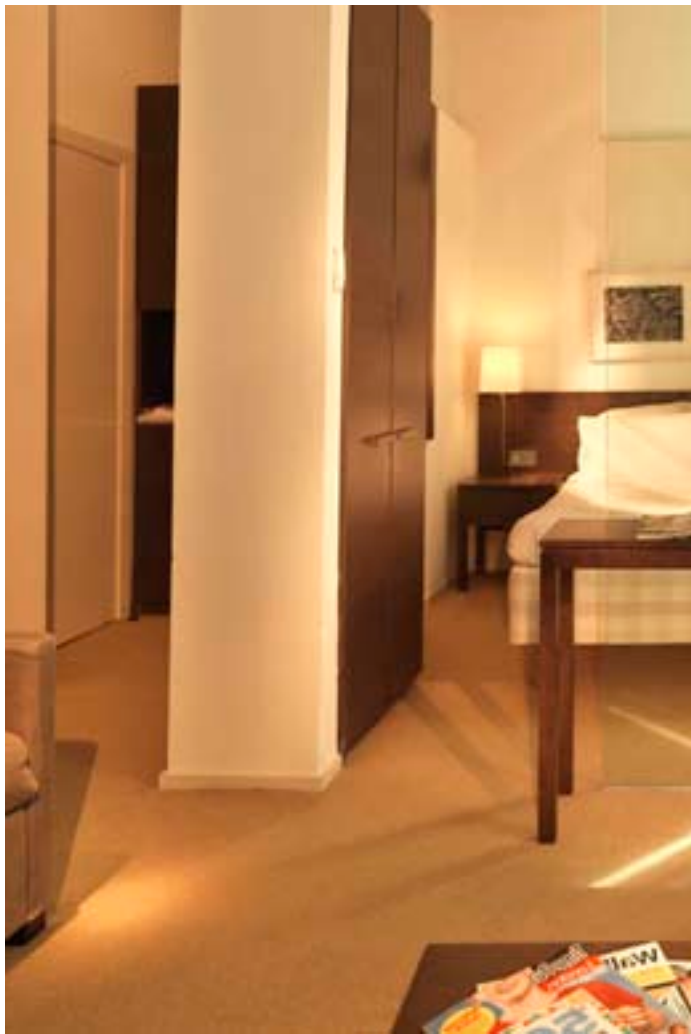
Business or pleasure?
Why not both, handsomely
both. Work and relax in
the comfort of your [ultra-
modern suite](#) in the heart of
London. La Suite is the new
definition of business travel.



PLEASURE

A business trip doesn't have to be a compromise. The personal and caring service at La Suite helps you to [feel at home, allowing you to conduct your business in a stress-free environment](#). After a day of meetings or presentations, you will always appreciate coming back to La Suite. Separation between living quarters and workspace. Fresh, organic breakfast delivered daily to your room. Choice Egyptian cotton linens. DVD library at reception. DVD player or Sony Playstation in each room.







LA SUITE

Marylebone

LA SUITE 37

LA SUITE
executive hotel

37 Nottingham Place
London
W1U 5LT
Tel: +44 (0) 207 4878100
Fax: +44 (0) 207 2241582

Info@lasuitehotel.com
www.lasuitehotel.com

LA SUITE 24

LA SUITE
next door

24 Nottingham Place
London
W1U 5NL
Tel: +44 (0) 207 4878100
Fax: +44 (0) 207 2241582

Info@lasuitehotel.com
www.lasuitehotel.com



